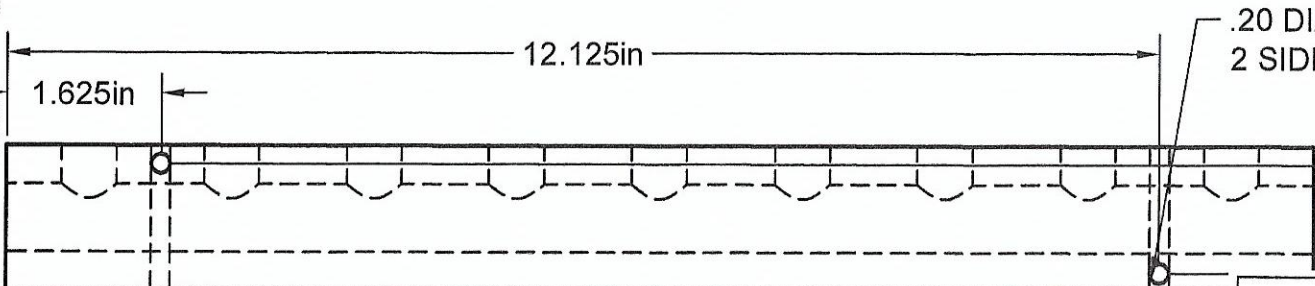
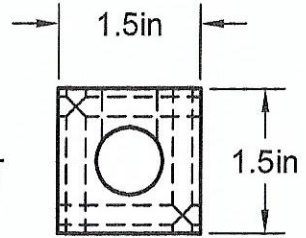
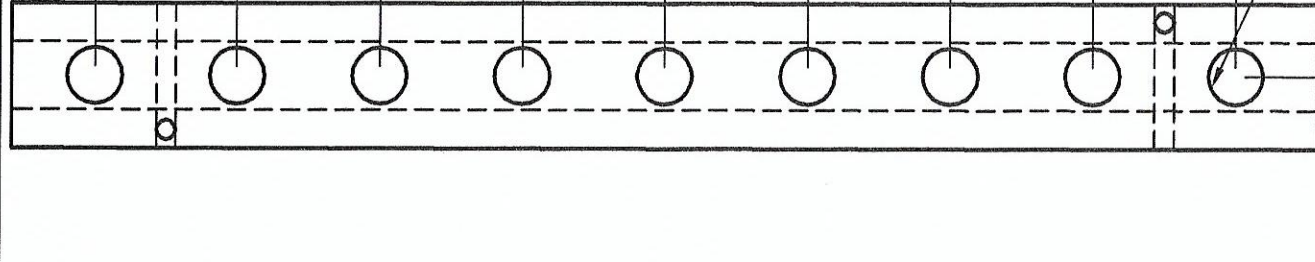


$\frac{3}{8}$ " NPT PORTS  
9 PORTS @ 1.50 IN CENTERS



.20 DIA MOUNTING HOLES  
2 SIDES

Part Number: **MS1009**

**MANIFOLD  
SUPPLY**  
[www.a1manifolds.com](http://www.a1manifolds.com)  
Email: [sales@a1manifolds.com](mailto:sales@a1manifolds.com)

Manifold Material: 6061-T6 Aluminum